

WCA – Business Engagement Group



Webinar 10th May 2023

Keith Freegard

Business Lead

Wiltshire Climate Alliance



Business Policy Research Project Report

How **well** are Wiltshire Businesses tackling the
Climate Crisis?

Content & Timings:-

- 12:00 Welcome
- 12:05 WCA, Keith Freegard - Business Carbon Policy Report
- 12:30 Good Energy – Cherish Jackson - Implementing Carbon Reporting
- 12:50 Discussion - How best to implement Carbon Reporting for SME's.
- 13:15 - End

Questions – Use 'CHAT' function to write questions during the talks OR ask to speak at end.

Who are WCA ?

- Wiltshire Climate Alliance -
<https://www.wiltshireclimatealliance.org.uk/>
- Wiltshire Climate Alliance is an umbrella organisation for local people and groups to collaborate and campaign for action on climate change.
- The Alliance welcomes a wide variety of groups and individuals who care passionately about the challenges of climate change and the impact of human activity on the environment.
- Over 30 member groups across the county -
<https://www.wiltshireclimatealliance.org.uk/our-members>
- Estimate 600+ membership in total

Business Engagement Work Group

- The Business Engagement Group's main objectives are to engage positively with businesses and organisations operating within Wiltshire to:-
 1. Increase sustainable best-practice in each sector
 2. Reduce damaging climate and environmental impacts
 3. Report and highlight both good and bad business practice

<https://www.wiltshireclimatealliance.org.uk/businessengagement>

Business Research Project - 2022

- WCA members proposed list of 50+ Wiltshire Firms
- Recruited Team – Volunteer Business Researchers
- Developed an Assessment Method & Scoring System
- Evaluated the Policy, Targets, Reports and Actions for 49 Firms
- Analysed the Results
- Published a Report of Main Findings & Key Recommendations
- For 2023 - INFLUENCE Key Stakeholders to promote change

How Big is Business Impact ?

AT UK level ...

- 1.4 million registered Companies employing more than 1 person
- ~12,000 Large businesses fall within UK Gov carbon reporting regulations (SECR 2019)
- So, ONLY 0.8% of UK organisations are REGULATED to report Direct CO₂ emissions
- But, those Regulated firms do represent 40% of UK sales turnover value.

AT Local County level ...

- Over 13,000 premises listed in Wiltshire for Business Rates



In Wiltshire.....

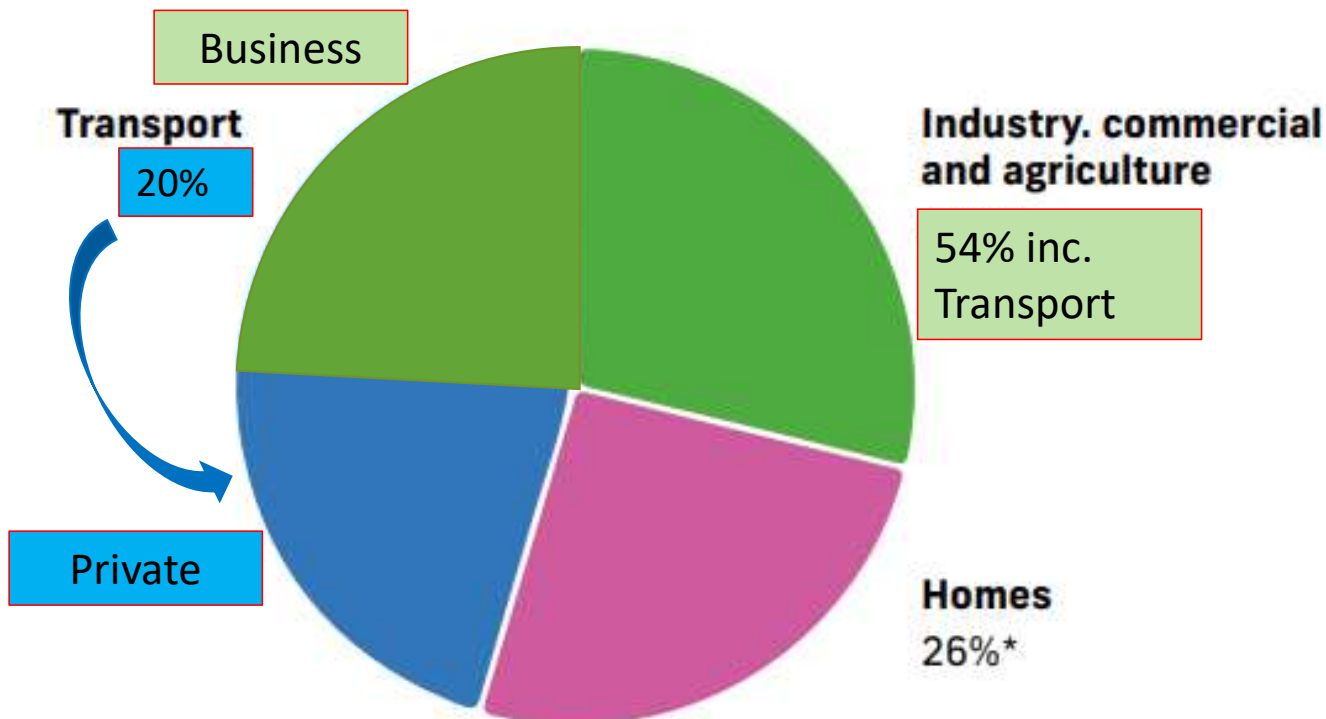
- Over 13,000 premises listed in Wiltshire for Business Rates (not all active)
- Direct Carbon from Business & Commercial Activity in Wiltshire = 54% of Emissions, =1400 Kt CO2 eq. (source BEIS data set)
- PLUS Indirect / Supply Chain Emissions can be 70 to 90% 'on top' of Directs

Conclusion – No hope of meeting 2030 'carbon neutral'
Wiltshire UNLESS business 'on-board'

How big is 'Business impact' in Wiltshire?

Chart 1: Wiltshire emissions by source, ktCO₂ (BEIS data, 2019)

Transport Allocated



Total Emissions = 2,587 kt

Road Transport = 1,138 kt

Commercial Orgs. = 838 kt

Total Emissions = 2,587 kt

Road Transport = 569 kt

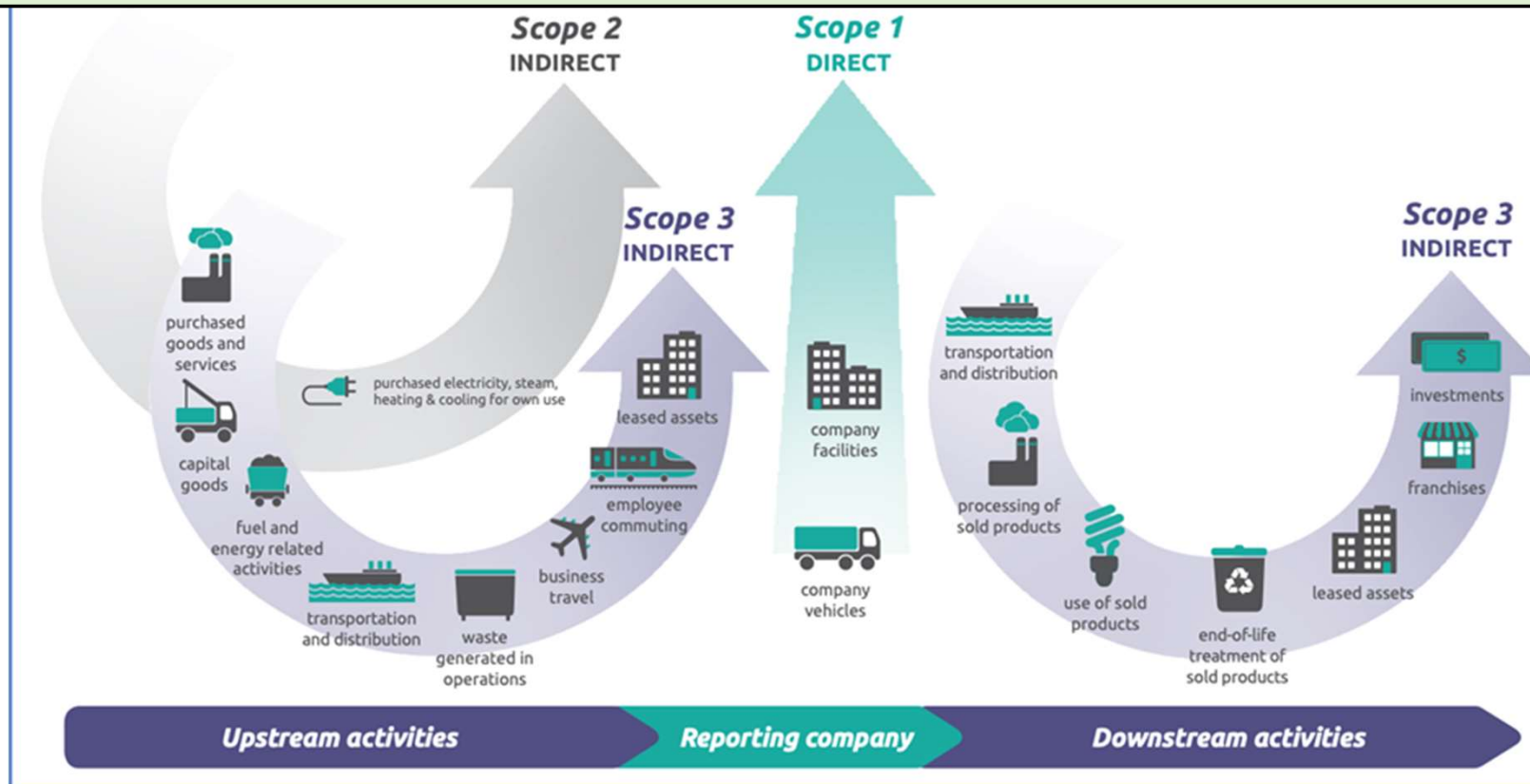
Commercial Orgs. = 1,407 kt

Scope 1 & 2 Emissions – NO Scope 3!

https://naei.beis.gov.uk/reports/reports?section_id=3

Business Emissions Scopes 1, 2, 3

Scope 3 – Supply Chain Emissions – ‘estimated 70 to 90% of Total Business Carbon Impact’ – various sources.



Project Report

Assessment Methodology

Researcher Scoring sheet - 45 questions across these sections:-

- Environmental Policy
- Targets /Goals
- Reporting quality
- Stakeholder Engagement / Governance
- Environmental Achievements / Quantified Performance
- Overall Opinion of Assessor

Volunteer Researchers – all trained in methodology and allocated scores based upon this set of criteria. Every result was peer reviewed for consistency.

Score Range	Status	Description of criteria
7 - 10	Green	'Good Evidence' - shows specific measurable targets with dates, use of statistics, qualified information
4 - 6	Amber	'Some evidence' - show some targets, with limited dates and limited use of statistics
0 - 3	RED	'No Evidence' - Shows no substantial data, targets, or data is unqualified

Typical 'drill-down' research questions:-

Environmental Policy	1.1	Does the company have a clearly stated environmental policy?
	1.2	Does the policy contain quantified commitments on the following?
	1.2.1	Carbon Footprint
	1.2.2	Energy use
	1.2.3	Transport
	1.2.4	Sustainable Supply Chain
	1.2.5	Other metrics (Scope 3 related)
	1.3	How long has the policy been in operation?
	1.4	Is it clear which areas of business operation have most climate impact?
	1.5	Is there a clearly stated review and improvement schedule?
	1.6	Is the organisation in a Regulated environmental <u>high risk</u> category?

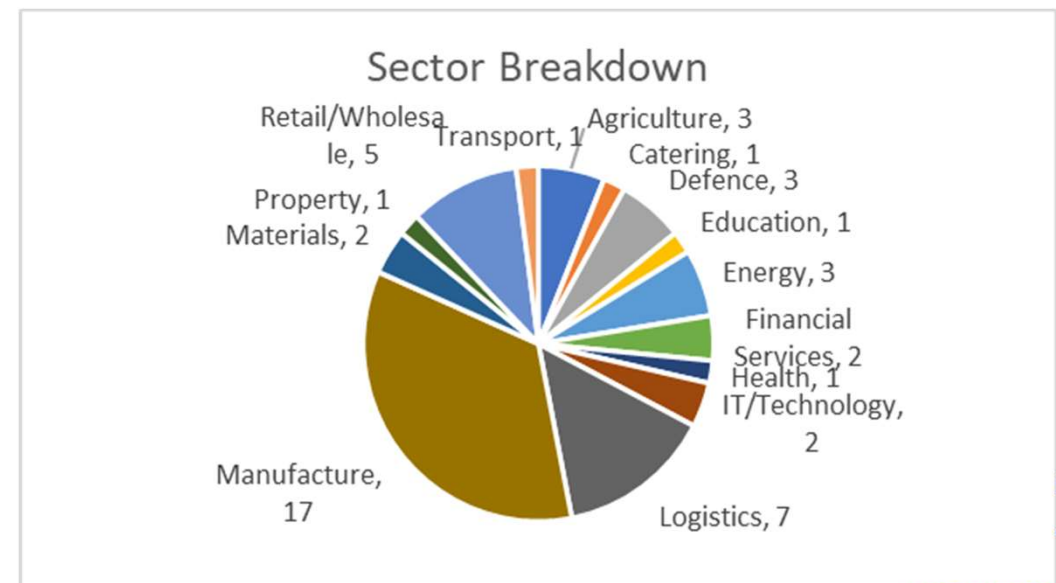
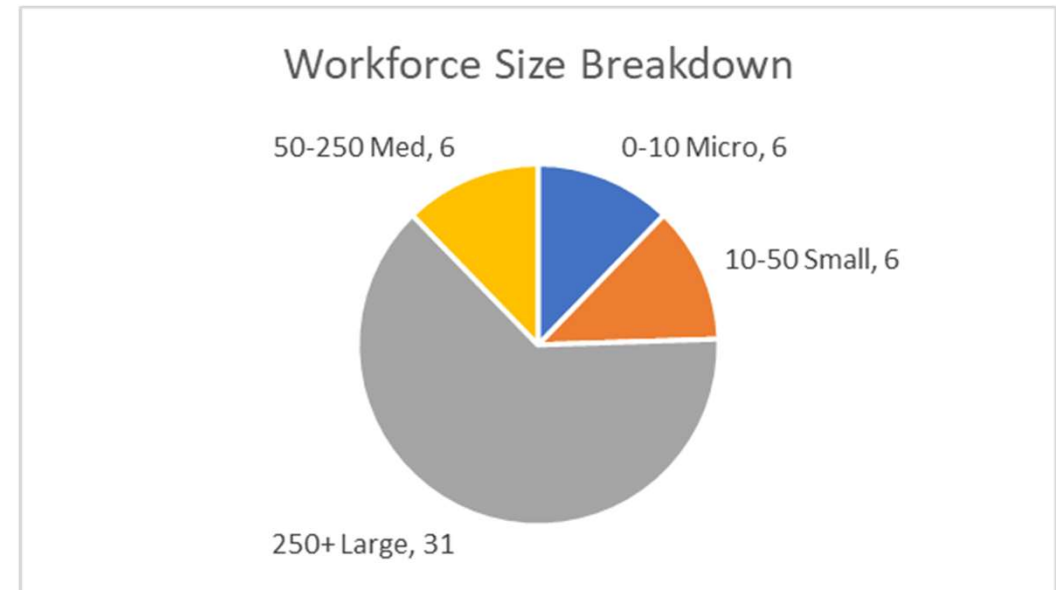
- Researchers assessed a 0 – 10 score for every question
- EVIDENCE used was referenced and saved for each item
- OVERALL opinion and final score to summarise each outcome

Sample Firms

For our 49 assessed firms:-

- ▶ 61% over 250 employees – ‘Large’
- ▶ Private Limited Co’s - 73%
- ▶ Manufacturing and Logistics - 49%

- ▶ NOT a ‘random sample’ from Wiltshire
- ▶ Nominated by WCA members as possible ‘big impact’ operations



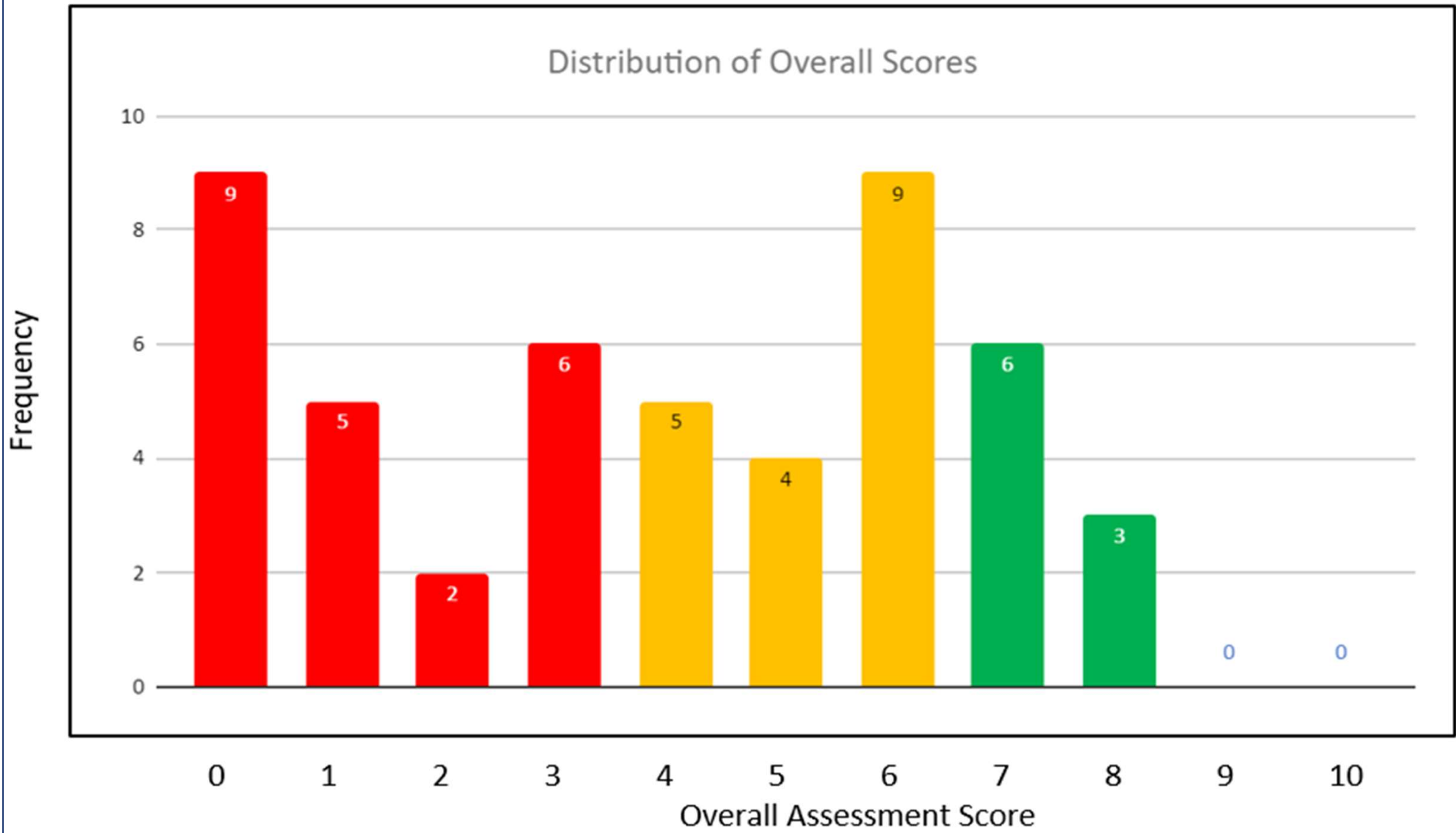
Headline Results

Full Report – available to download here :-

https://www.wiltshireclimatealliance.org.uk/files/ugd/be917e_30c8c4185b134f42919a947aac7a8f1d.pdf?index=true



Distribution of Overall Scores



Top 9 Ranking – ‘Good Evidence’ level

Business Name	Legal registered Status	Type of Business	Approximate Workforce Size	Overall Score
QinetiQ	Quoted PLC	Defence	250+ Large	8
Tarmac	Quoted PLC	Materials	250+ Large	8
Wincanton	Quoted PLC	Logistics	250+ Large	8
Good Energy Group Plc	Ltd Company	Energy	50-250 Med	7
Hobbs House Bakery	Ltd Company	Retail/Wholesale	50-250 Med	7
BMW Plant Swindon	Ltd Company	Manufacture	250+ Large	7
Cereal <u>Partners</u> (Nestle Cereals)	Quoted PLC	Manufacture	250+ Large	7
Nationwide Building Society	Partnership	Financial Services	250+ Large	7
Royal Mail Group	Quoted PLC	Logistics	250+ Large	7

Mid-table range of firms – ‘Some Evidence’

Ark Data Centres	Ltd Company	IT/Technology	50-250 Med	6
Aldi Stores Limited	Ltd Company	Retail/Wholesale	250+ Large	6
Arla Foods Ltd	Ltd Company	Agriculture	250+ Large	6
Cooper Tires & Co Europe Ltd	Ltd Company	Manufacture	250+ Large	6
D S Smith Packaging	Ltd Company	Manufacture	250+ Large	6
DPD Group UK Ltd	Ltd Company	Logistics	250+ Large	6
Great Western Hospitals NHS Foundation Trust	Public Body	Health	250+ Large	6
Virgin Media Ltd	Ltd Company	IT/Technology	250+ Large	6
WAVIN Plastic Pipes	Ltd Company	Manufacture	250+ Large	6
Apetito UK	Ltd Company	Catering	250+ Large	5
Chemring Countermeasures UK	Quoted PLC	Defence	250+ Large	5
Herman Miller	Ltd Company	Manufacture	250+ Large	5
Ministry of Defence	Public Body	Defence	250+ Large	5
NovaCast	Ltd Company	Manufacture	10-50 Small	4
Avon Protection	Quoted PLC	Manufacture	50-250 Med	4
Accord SW Group	Charity	Property	250+ Large	4

Lower range - scores 4, 3, 2

Siemens Mobility Limited	Ltd Company	Manufacture	250+ Large	4
Stonegate Farmers Ltd	Ltd Company	Agriculture	250+ Large	4
Anthony Best Dynamics Ltd	Ltd Company	Manufacture	50-250 Med	3
Hills UK	Ltd Company	Materials	250+ Large	3
Homebase	Ltd Company	Retail/Wholesale	250+ Large	3
James Hay Pensions Trustees Limited	Ltd Company	Financial Services	250+ Large	3
T.J.Morris Ltd	Ltd Company	Retail/Wholesale	250+ Large	3
Watson Fuels (World Fuel Services)	Ltd Company	Energy	250+ Large	3
Longford Farms Ltd	Ltd Company	Agriculture	0-10 Micro	2
Dyson	Ltd Company	Manufacture	250+ Large	2

The relegation zone.. 1 or 0 scores

Airsprung Group PLC	Quoted PLC	Manufacture	250+ Large	1
P D Manufacturing / part of Avon Group	Ltd Company	Manufacture	10-50 Small	1
SPC Europe	Ltd Company	Manufacture	50-250 Med	1
Welton Bibby & Baron	Ltd Company	Manufacture	250+ Large	1
Wiltshire College and University Centre	Public Body	Education	250+ Large	1
AJ Cocks Transport	Ltd Company	Logistics	0-10 Micro	0
Devizes Taxis Limited	Ltd Company	Transport	0-10 Micro	0
Salisbury Investment Castings	Ltd Company	Manufacture	0-10 Micro	0
Transport SW	Ltd Company	Logistics	0-10 Micro	0
Westbury Car Auctions	Ltd Company	Retail/Wholesale	0-10 Micro	0
Hams Transport	Ltd Company	Logistics	10-50 Small	0
Kinch Fuel Oils	Ltd Company	Energy	10-50 Small	0
Mike Garbutt Transport Limited	Ltd Company	Logistics	10-50 Small	0
Moulton Bicycles	Ltd Company	Manufacture	10-50 Small	0

hire
ate



Main Findings of Report :-

- Larger Firms are doing the most (because they have to)
- Strong Governance, Policy & Targets help to deliver Good Results
- Small & Micro firms (<50 staff) nearly all have NIL POLICY
- Scope 3 Emissions – mostly ignored or only ‘part’ reported
- Only 4 firms appear to be ‘On-Track’ to Hit 2030/50 Targets
- Baseline Years = 2018/19/20 – so short trend Lines (inc. Covid)
- Focus on ‘easy-wins’ – not Fundamental Change in Core Activity
- Some evidence of ‘Green-Hushing’ – we suspect
- Consumer Facing Brands – more likely to Promote Green policy
- Huge ‘Action Gap’ in SME’s sector – especially below 50 staff.

Example of 'Good Policy'

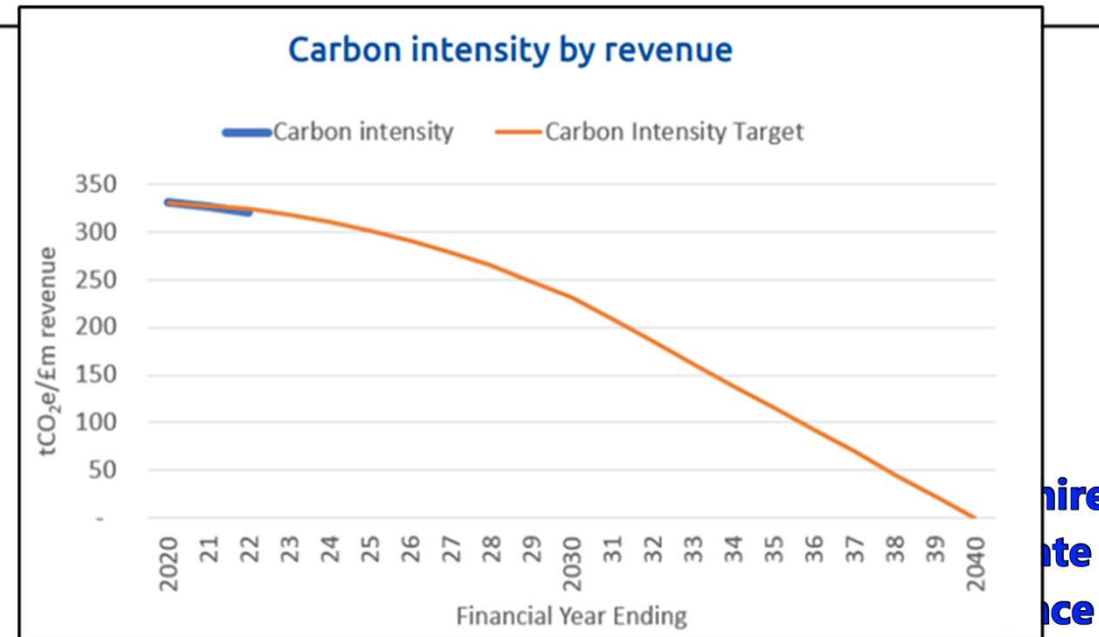
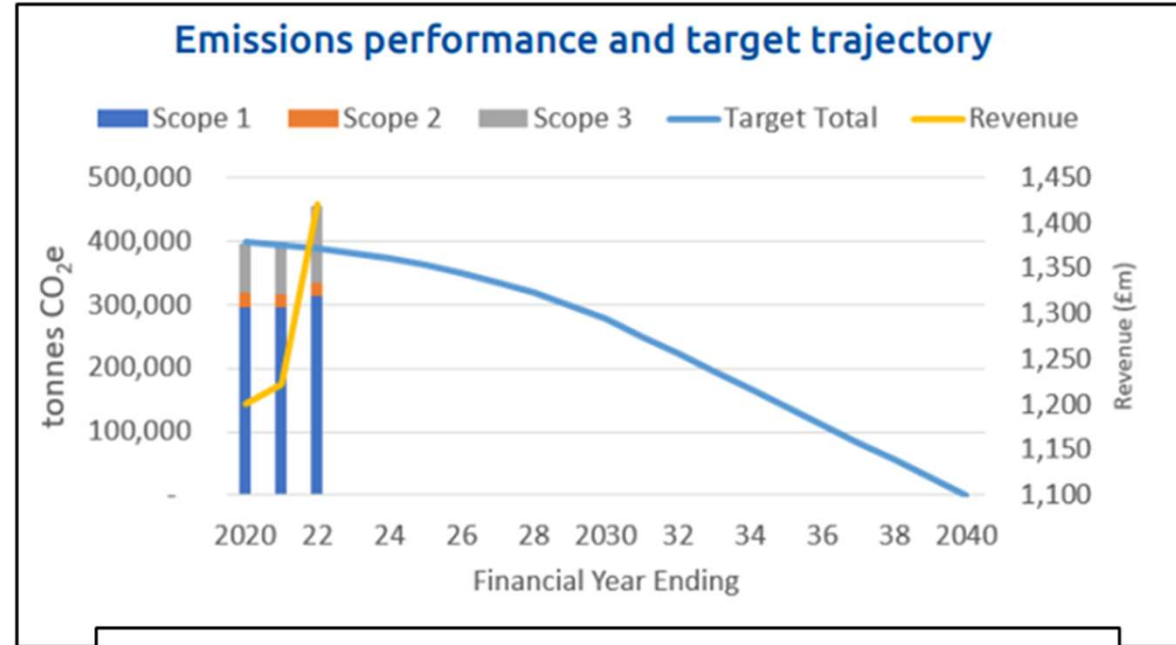
QinetiQ's Net Zero Plan - March 2022

Timeframe	Scopes 1&2	Scope 3	Total
2020	Base year	Base year	Base year
2030 (our near-term target)	-50% absolute reduction	-30% absolute reduction	-33% absolute reduction
2050 or sooner	Net-Zero	Net-Zero	Net-Zero

- Separate Scope 1 & 2 Targets
- Progress along timeline
- Simple, quantified targets
- Some flexibility on hitting Net-Zero

Performance Trends - Wincanton – Logistics

- Only 3 year 'trendline'
- Covid-19 2020/21 years
- CO2 emissions UP + 10%
- 2022 Revenue UP x 2.5
- Intensity Ratio – smooths out
- But 'Too Early' to judge if 'On-Track' for 2030 / 40



hire
te
ce

Main Recommendations

UK Government

- Extend regulatory coverage for Carbon Reporting to include >50% of firms / >75% sales
- Include Scope 3 emissions in the reporting requirement – Upstream / Downstream
- Insist firms have a Future Plan to reach Net Zero – with Progress Tracked in reports

Wiltshire Council

- Review and tighten Procurement Rules for all services - Sustainability led.
- Use planning controls to insist new commercial premises and infrastructure is 'green'.

Local Business Managers

- Implement Carbon reporting and control – as per this report's Top 5 firms
- Utilize competitive advantage from being Low Carbon business

OR

- Get Started on your Carbon Reduction journey ...
- Start here : **Zero Carbon Business** <https://zerocarbonbusiness.uk/>



Business Group's main Focus for 2023

- **Phase 1 - March/ April / May - Communicate Report & Findings by:-**
 - Media Launch across all Local Channels
 - Webinar Event to Invited Stakeholders & Interest groups
 - Direct Face-to-Face Presentations – Key Target Groups to Influence
 - WCA Members meetings - recruit Active Volunteers to Work Locally
- **Phase 2 - Collaborate to Deliver Change**
 - Work with Business Support sector to promote Green Policy & Action
 - Council Climate Task Force – lobby to Delivery 'Green Economy' Action Plans
 - Identify Areas of 'Best Influence' for WCA to focus upon
 - Help Town Councils to Deliver support for Green Business – Micro & Small firms.

Want to Help? – contact Keith Freegard



Any questions?

Report download link -

<https://www.wiltshireclimatealliance.org.uk/files/ugd/be917e30c8c4185b134f42919a947aac7a8f1d.pdf?index=true>

List of useful resources for business -

<https://www.wiltshireclimatealliance.org.uk/files/ugd/be917e2343e7e2f5fc42e7a5fa1541aa2f7098.pdf?index=true>

Keith Freegard

keith@wiltshireclimatealliance.org.uk

Mob: 07867 526768

